



C WOOD & SON
LUTON LTD

Case Study



**Artificial Grass
Lower Stondon**

The Job

C Wood & Son Luton Ltd were contracted by a couple in Lower Stondon to install artificial grass to one side of their property front.

We first excavated the right hand side of the grass and soil to a depth of 100mm and disposed of. We then supplied and laid geotextile membrane topped with MOT, screed sand, compact and laid a top membrane, prior to laying the artificial grass. The clients chose a mid-range artificial grass so we supplied and laid that down which included all joining and finishing trims, adhesive and joiners.

The clients were over the moon with the results and have asked us to return in a couple of years to carry out the same works to the left hand side of the property.



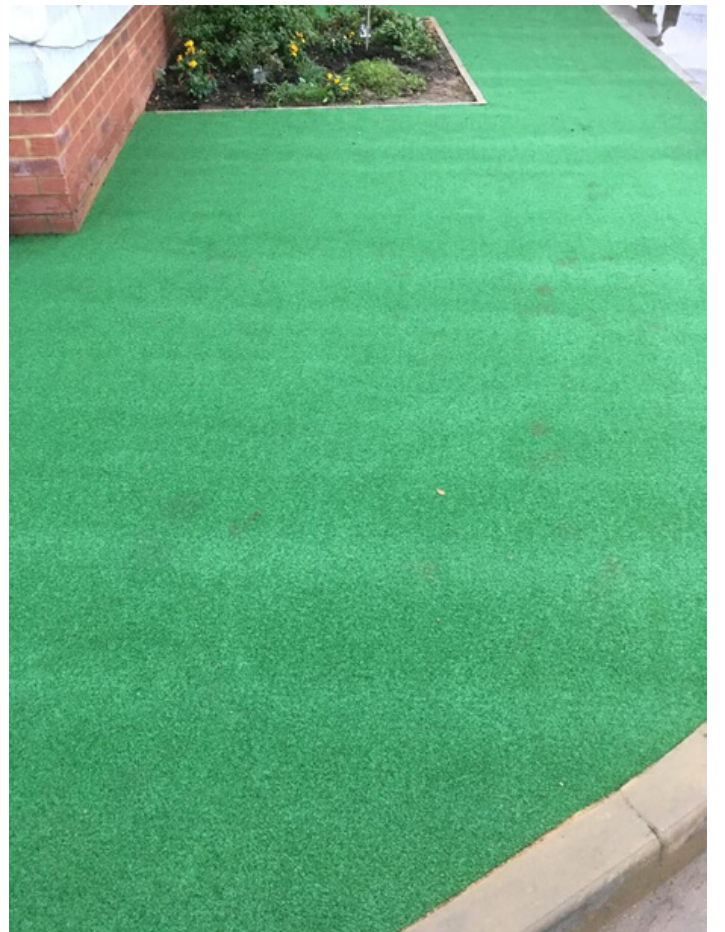
THE PROCESS



THE PROCESS



THE PROCESS



AFTER



AFTER

