



C WOOD & SON
LUTON LTD

Case Study

Wet Room
Luton



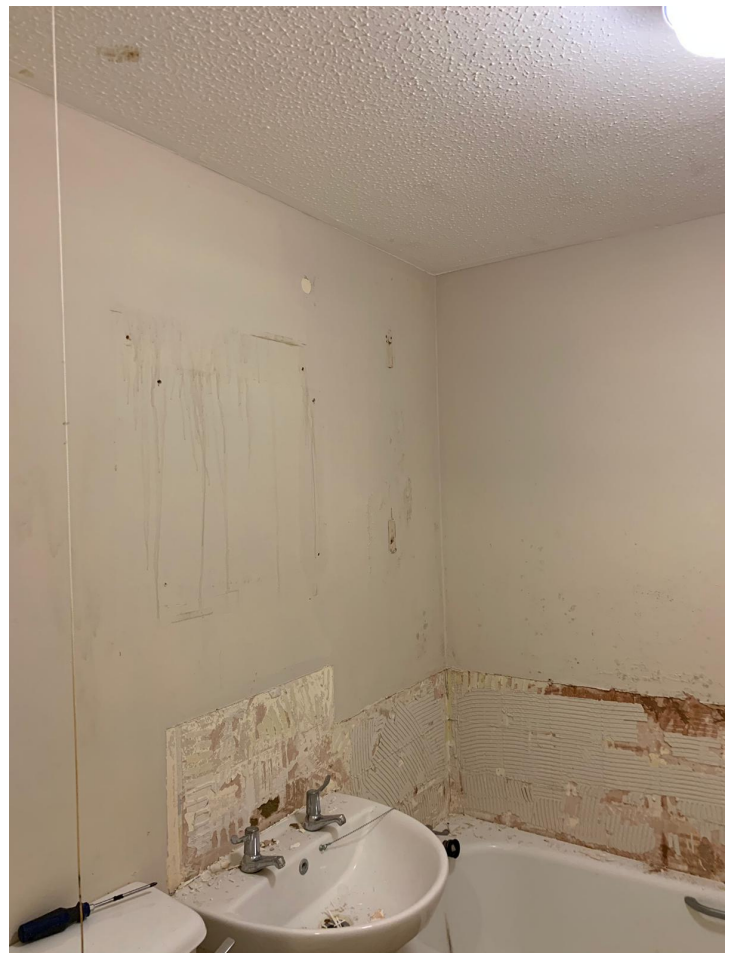
The Job

C Wood & Son Luton Ltd were contracted by Luton Borough Council to remove an old bathroom suite and install a wet room for one of their disabled tenants.

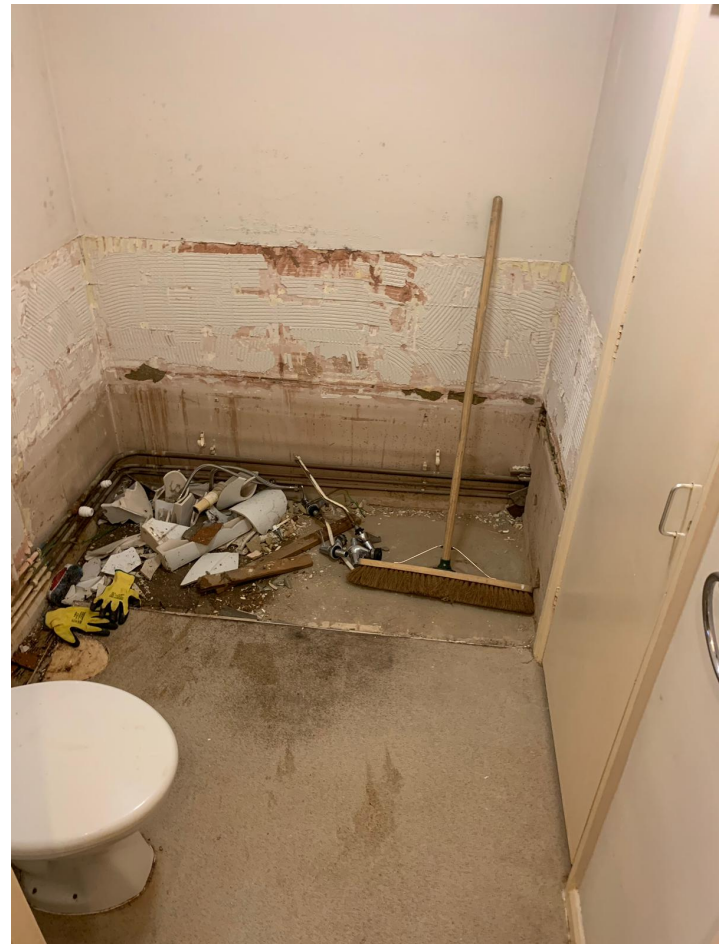
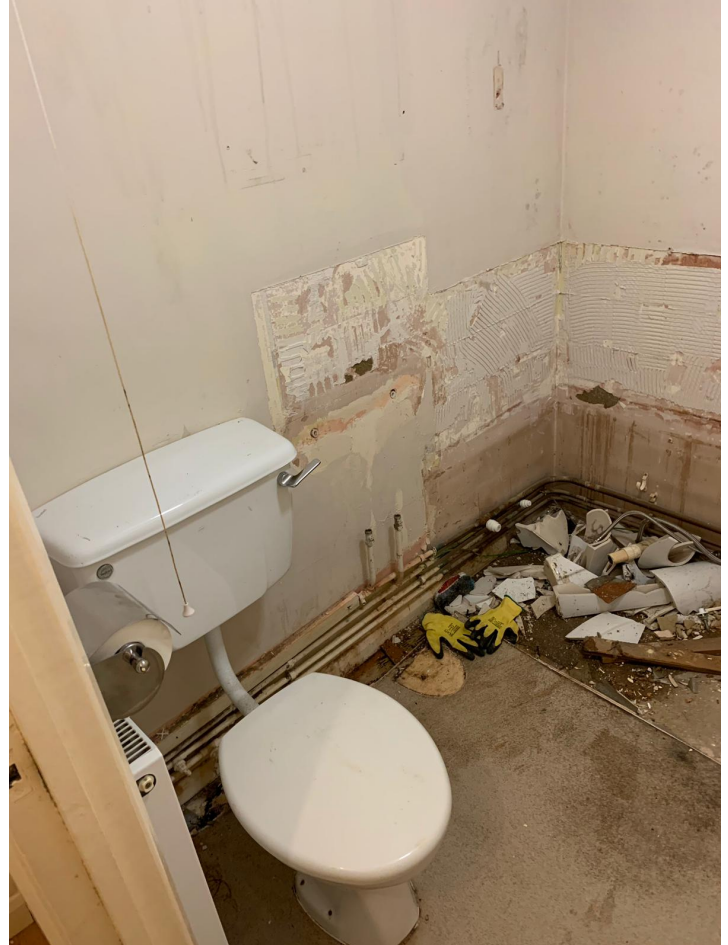
We first removed the old bathroom suite, existing wall tiles and the flooring. The flooring was lino and after taking this up, we discovered asbestos floor tiles. Work was ceased until the asbestos tiles were safely removed and disposed of. Once the asbestos tiles were removed, we dug out the floor, laid a pre-formed shower tray and first fixed all plumbings and electrics. The walls were tiled and the second fixed plumbing and electrics were completed. We finished by painting the ceiling and laying a non slip altro flooring.



THE PROCESS



THE PROCESS



AFTER

