



C WOOD & SON
LUTON LTD

Case Study



Commercial Strip Out
Luton

The Job

C Wood & Son Luton Ltd were employed to strip out and divide 1 unit, into 2 units, for Luton Mall.

The previous women's clothing store was stripped to create one unit for Superdry and one unit which is still unknown.

We cut an opening in the existing reinforced concrete floor slab and installed a steel staircase to one of the units and installed a dividing partition as well as installing fire alarm interface system and sprinklers ready for the new tenant.



BEFORE



THE PROCESS



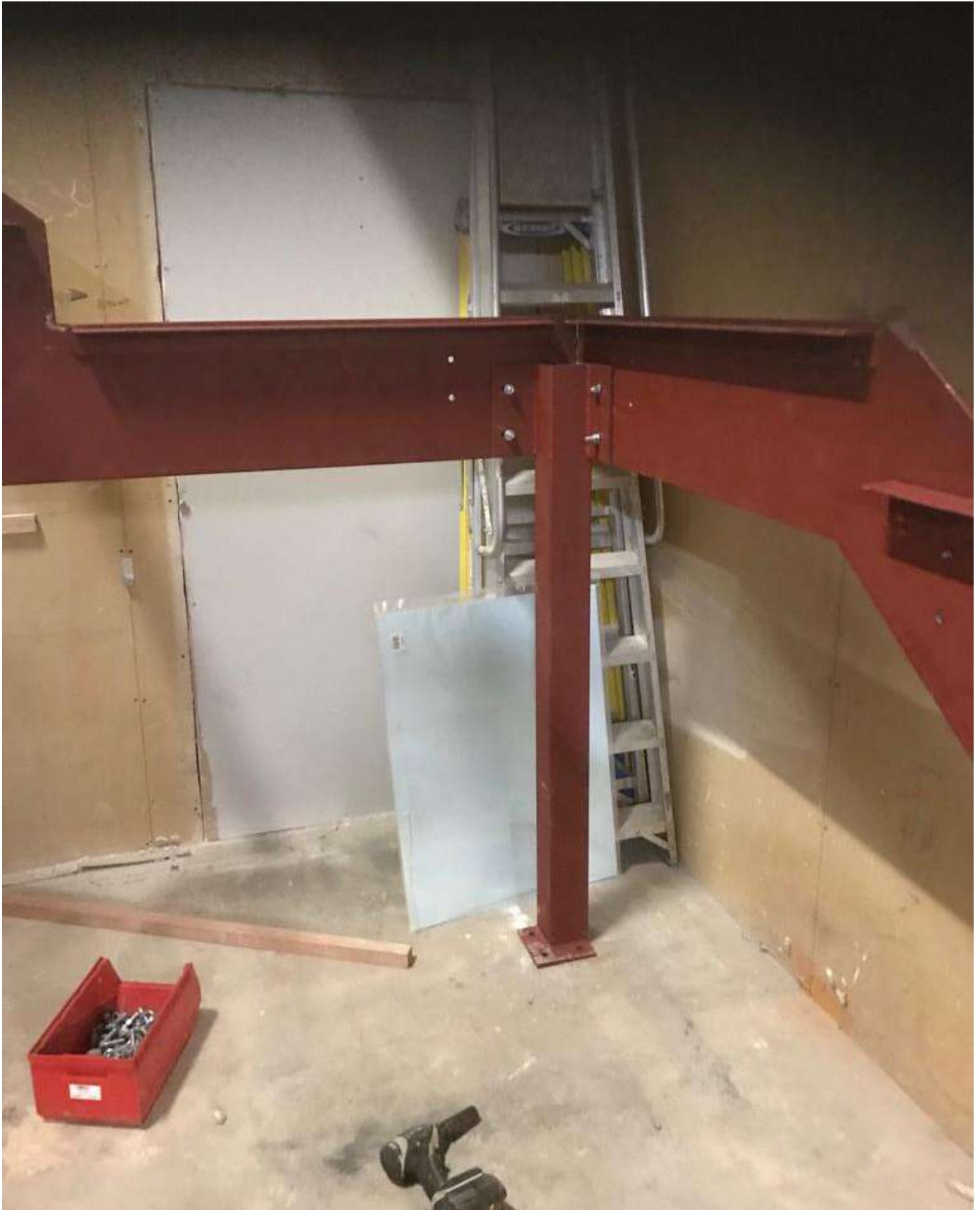
THE PROCESS



THE PROCESS



THE PROCESS



THE PROCESS



AFTER

