



C WOOD & SON
LUTON LTD

Case Study



Store Room
Luton Mall

The Job

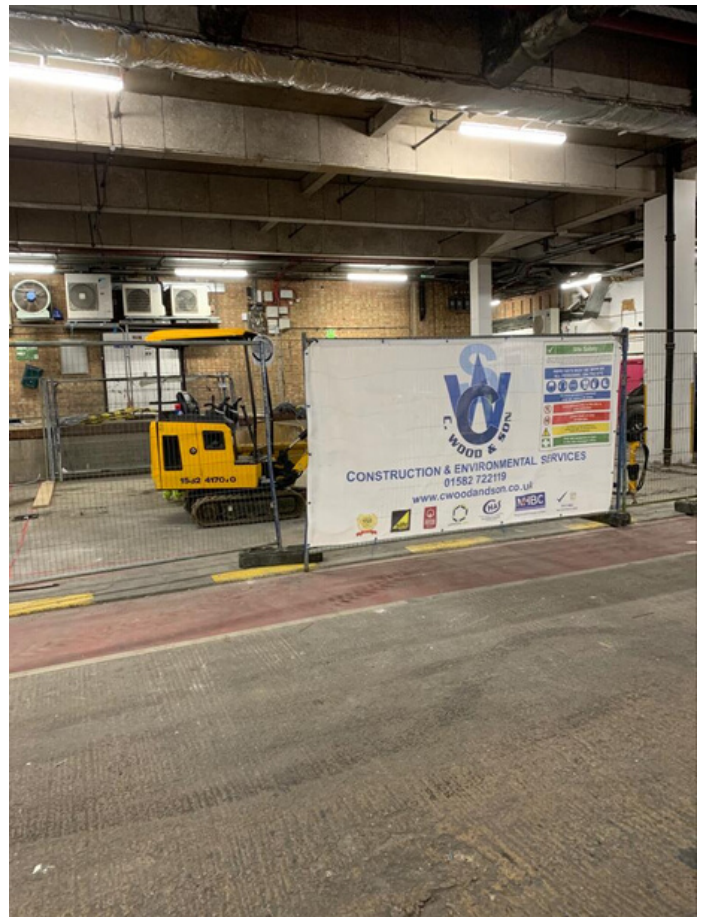
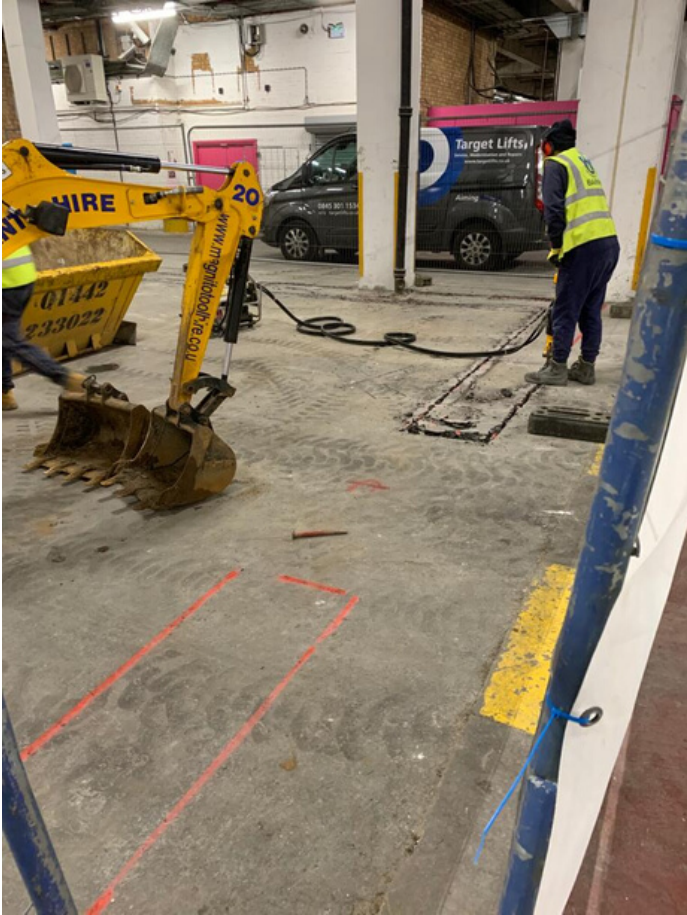
C Wood & Son Luton Ltd were contracted by Luton Mall to build a store room in their service road.

Before works commenced, we first carried out a CAT scan to check for any services underground. After the scan came back clear, the footings for the store room were dug and concreted. We then built block walls using 140mm 7 newton facing blocks, followed by the installation of the roof joists, with steels to support them. We plied the roof, installed a set of double doors and finished with the fascias and decoration ready for handover.

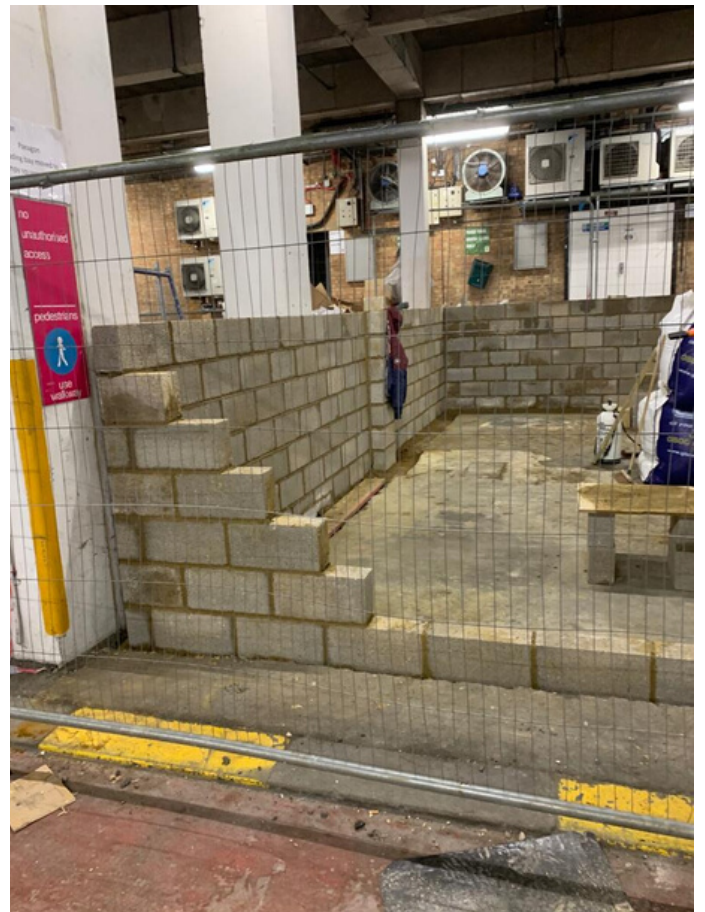
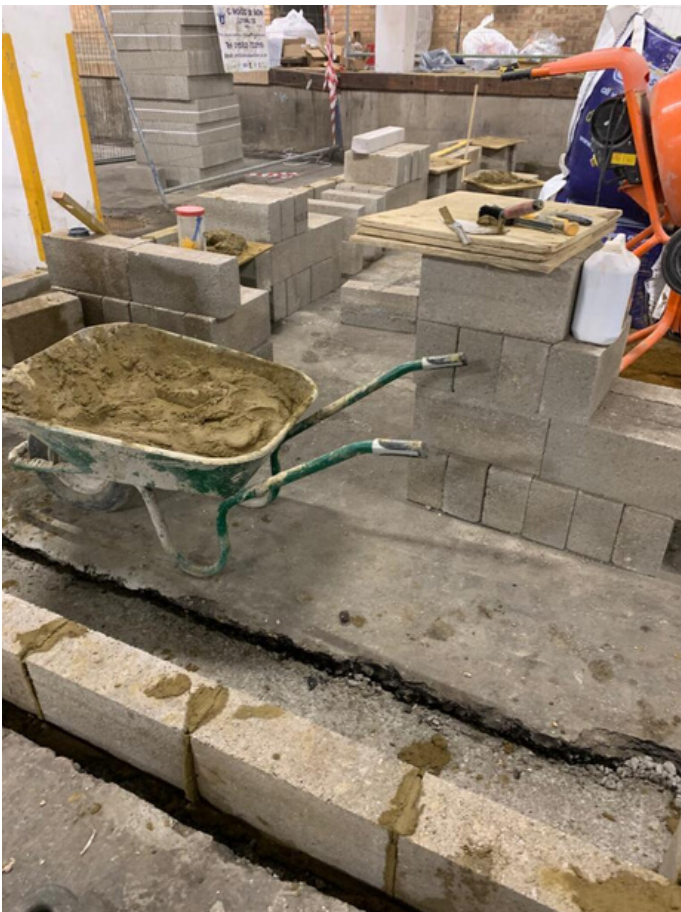
The client is very happy with the finished result.



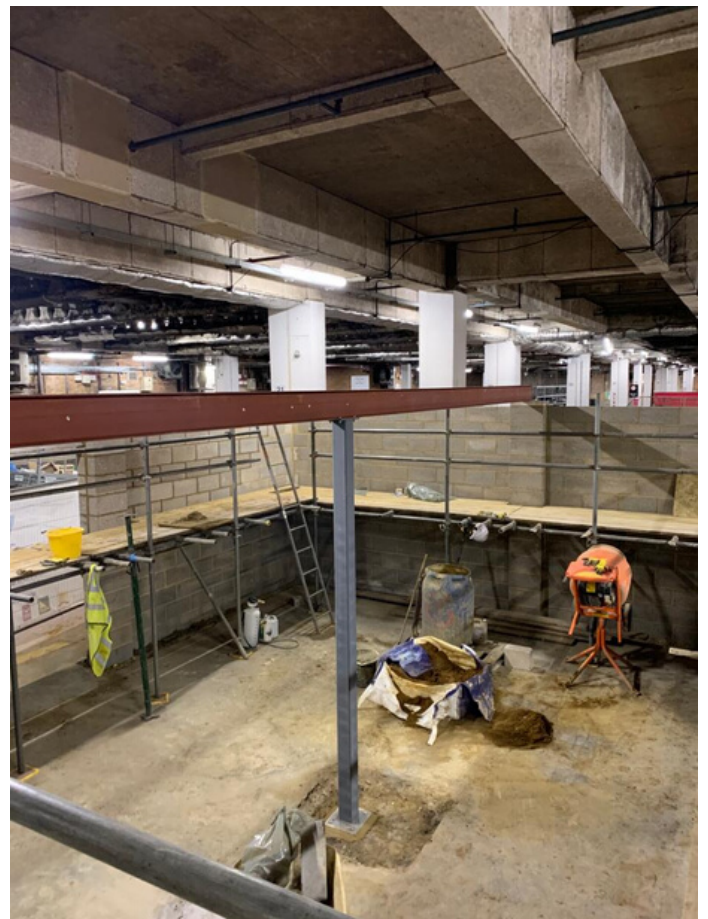
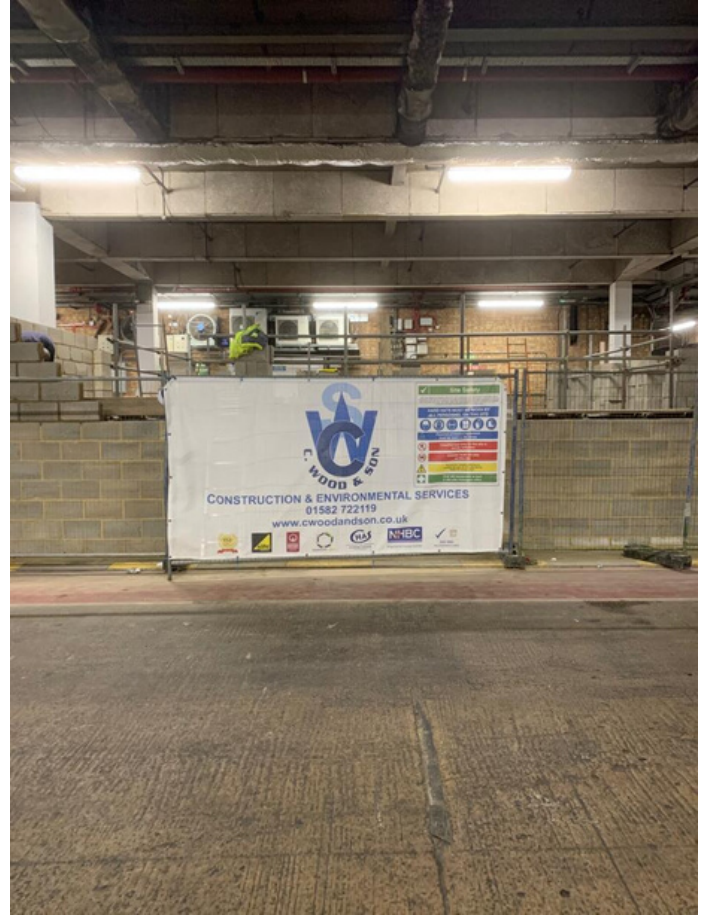
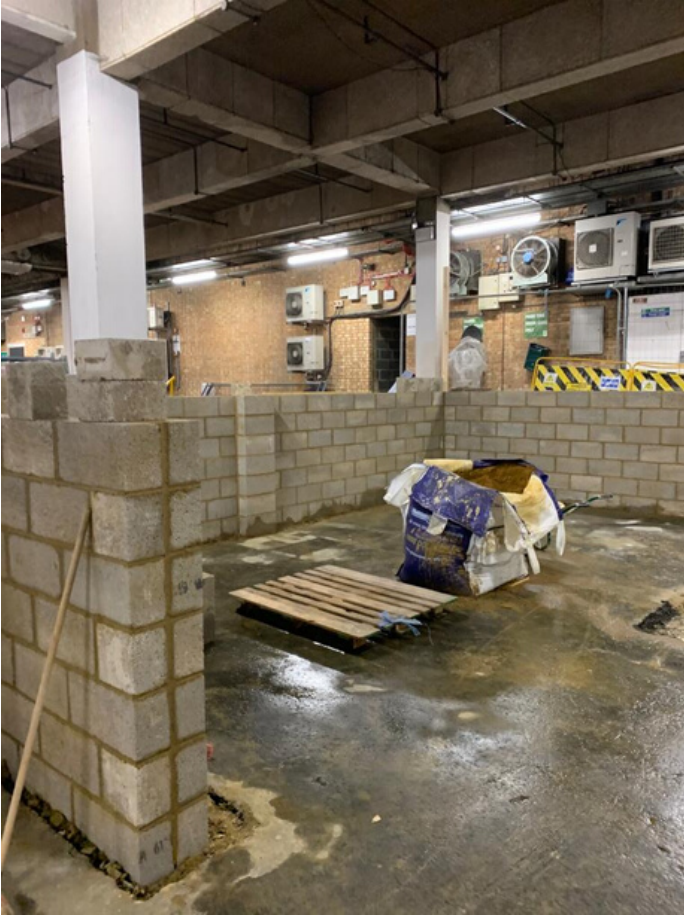
THE PROCESS



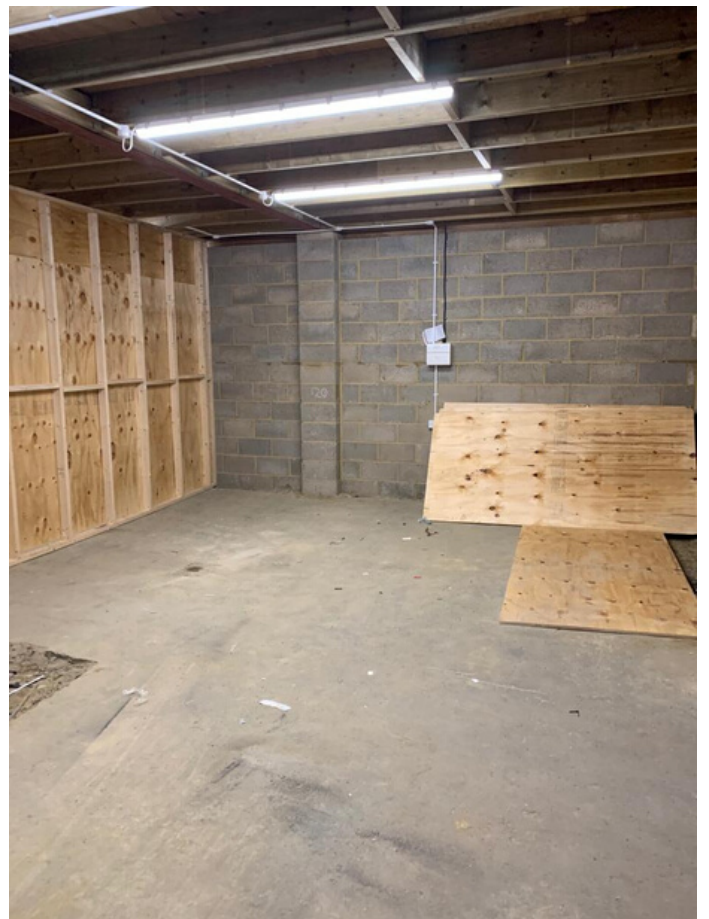
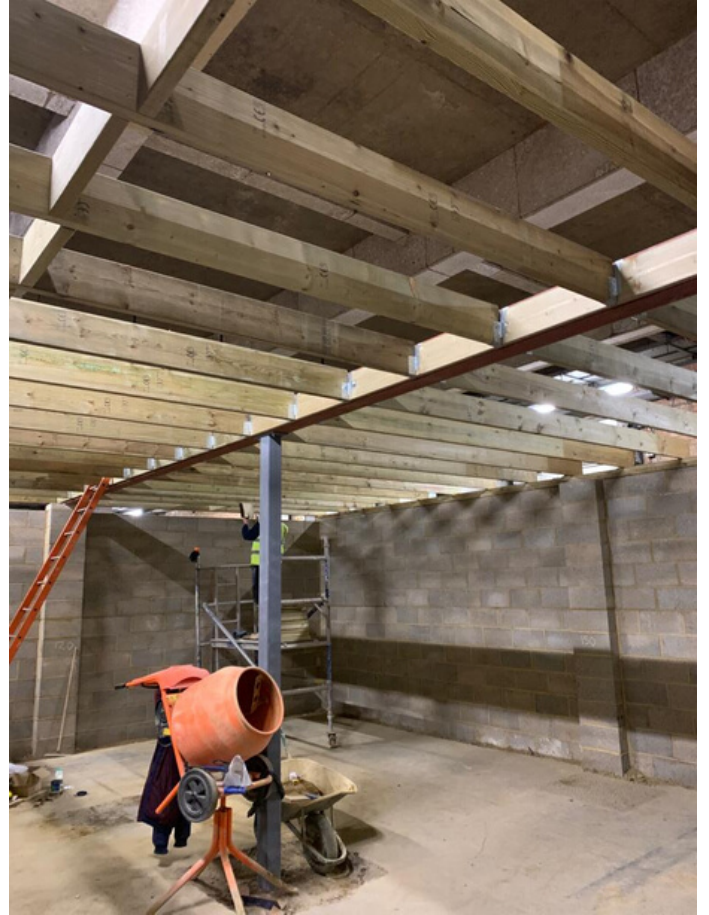
THE PROCESS



THE PROCESS



THE PROCESS



THE PROCESS

